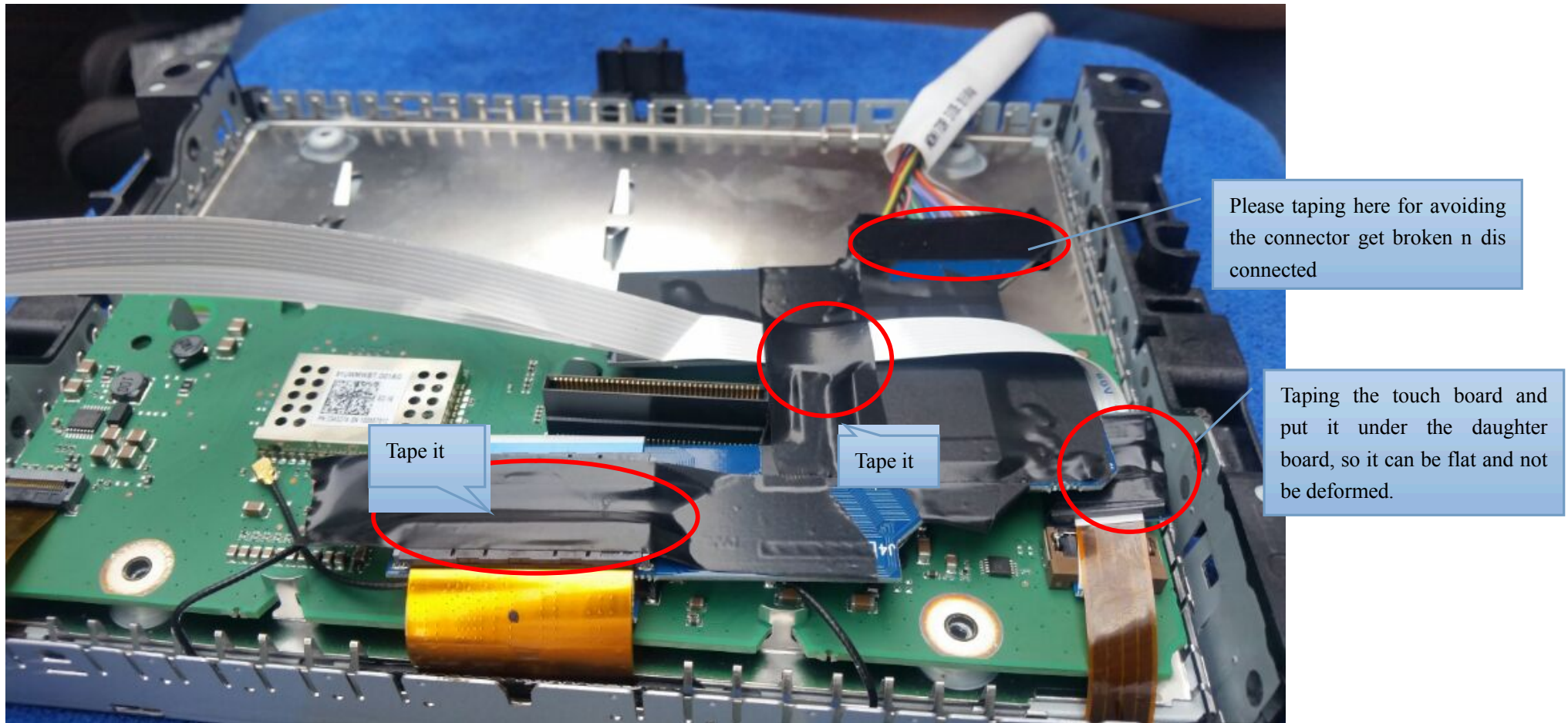


Dear Sir and Madam,

Due to there is not enough space in the monitor, so the daughter board of Chrysler is very easy to be broken.

Below is the instruction to install it in the better way to keep it flat:

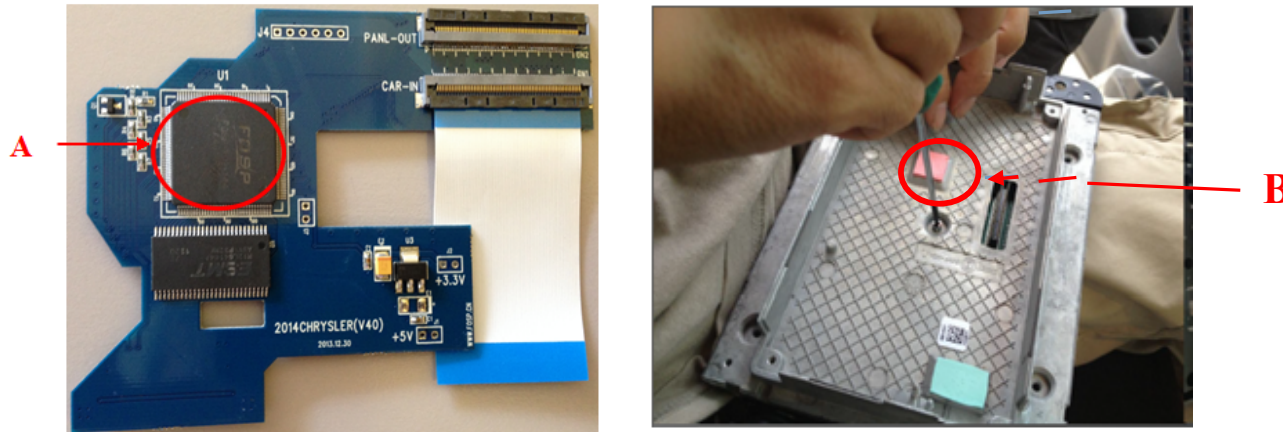
Picture 1:



Picture 2:

There is a bumpy point (B) on the back cover of the head unit against chip A of the daughter board, which would broke chip A after a while.

So please flat B part from the back cover of the screen



**B is the bumpy point which is behind/at another side of the pin part**

Picture 3:

Please taping the wires too (touch or LVDS) when it comes out from the screen, so it won't get broken

